

Christmas Multiplication and Division Challenge Cards

twinkl

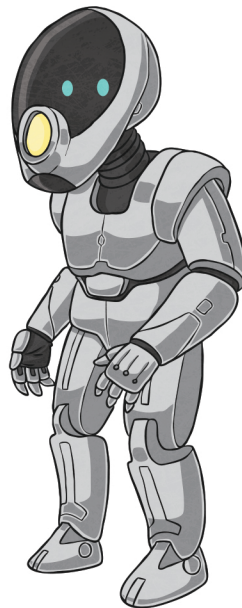
Christmas Multiplication and Division

1. There are 1200 presents that Santa needs wrapping. If 30 elves are wrapping, how many presents do they each wrap?



Christmas Multiplication and Division

2. There are 1160 robot toys to be packed in 8 boxes. How many robots will there be in each box?

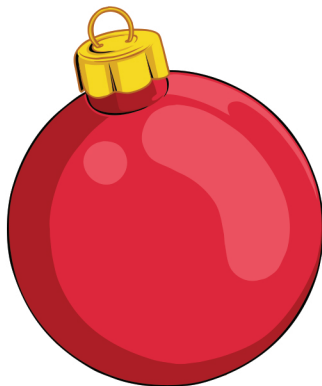


Christmas Multiplication and Division

3. One sack of reindeer dust weighs 475g. How much will eight sacks weigh?



4. Christmas tree decorations are sold in packs of five. If there are 60 decorations altogether, how many packets will that be?



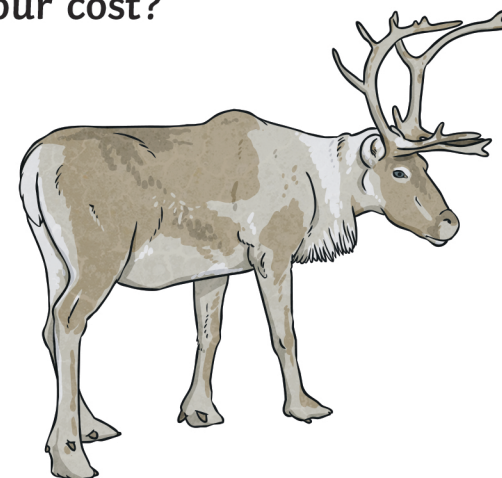
5. Jem the elf has been given the task of putting magic pens in packs of eight. If there are 720 pens, how many packets will she need?



6. Santa has travelled 1467 miles in three hours. How many miles did he travel in one hour?



7. Rudolph statues are £25.30 each. How much would four cost?



Christmas Multiplication and Division

8. There are four giant mince pies in a pack. How many mince pies would there be in 296 packs?



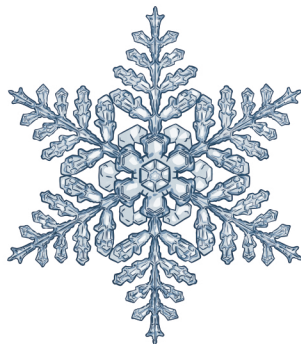
Christmas Multiplication and Division

9. Bobby orders a huge illuminated Santa for the front of his house. It costs £1128. He pays one third as a deposit. How much is the deposit?



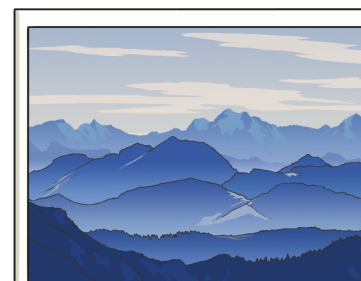
Christmas Multiplication and Division

10. Symmon, Chi and Kee make some snowballs for a snowball fight. They make 195. If they throw equal amounts of the snowballs, how many do they each throw?



Christmas Multiplication and Division

11. Amelia cannot wait for Christmas! It is four weeks until Christmas Day! How many days is this?



December

Mon	Tue	Wed	Thur	Fri	Sat	Sun
			1	2	3	4
5	6	7	8	9	10	11
12	13	14	15	16	17	18
19	20	21	22	23	24	25
26	27	28	29	30	31	

12. Four identical Christmas puddings weigh 340g. How much does one pudding weigh?



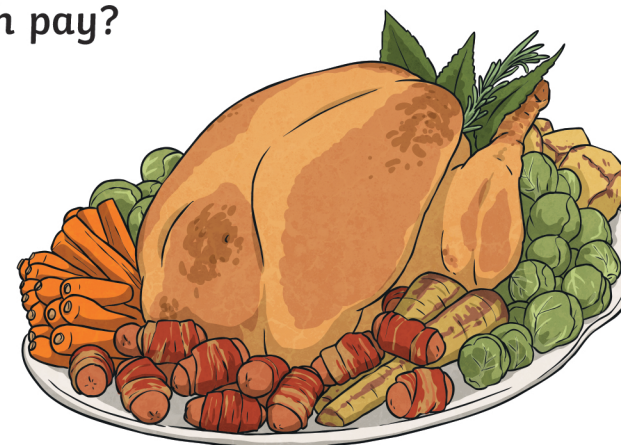
13. Snowmen scarves are sold at £12.22. How much would six scarves cost?



14. Four children have 14 presents each in their Christmas stockings. How many presents are there altogether?



15. The 12 Lords a Leaping went out for dinner. Their bill came to £804! How much did they each pay?



16. Six naughty pixies have found 162 bottles of Giggle Juice. They share the bottles equally between them. How many bottles did they each have?



17. Each tray of Santa chocolates has eight chocolates. How many chocolates would there be in 167 trays?



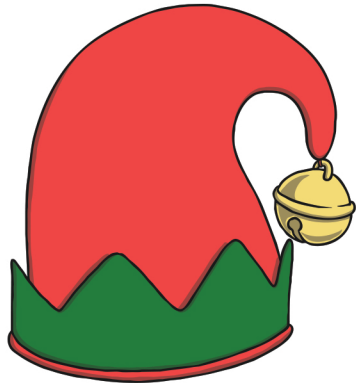
18. Boxes of tinsel are sold in mixed colours. If there are 492 strings of tinsel, and four different colours, how many strings of each colour will there be?



19. The entrance cost to the Christmas Bonanza party is £7. If 278 people go to the party, how much money is made in entrance fees?



20. Elf hats are in sets of eight. If there are 128 hats altogether, how many sets will there be?



Christmas Multiplication and Division Challenge Cards Answers

- | | |
|-------------------|-----------------|
| 1. 40 | 11. 28 days |
| 2. 145 | 12. 85g |
| 3. 3.8kg or 3800g | 13. £73.32 |
| 4. 12 | 14. 56 presents |
| 5. 90 | 15. £67 |
| 6. 489 miles | 16. 27 |
| 7. £101.20 | 17. 1336 |
| 8. 1184 | 18. 123 |
| 9. £376 | 19. £1946 |
| 10. 65 | 20. 16 |